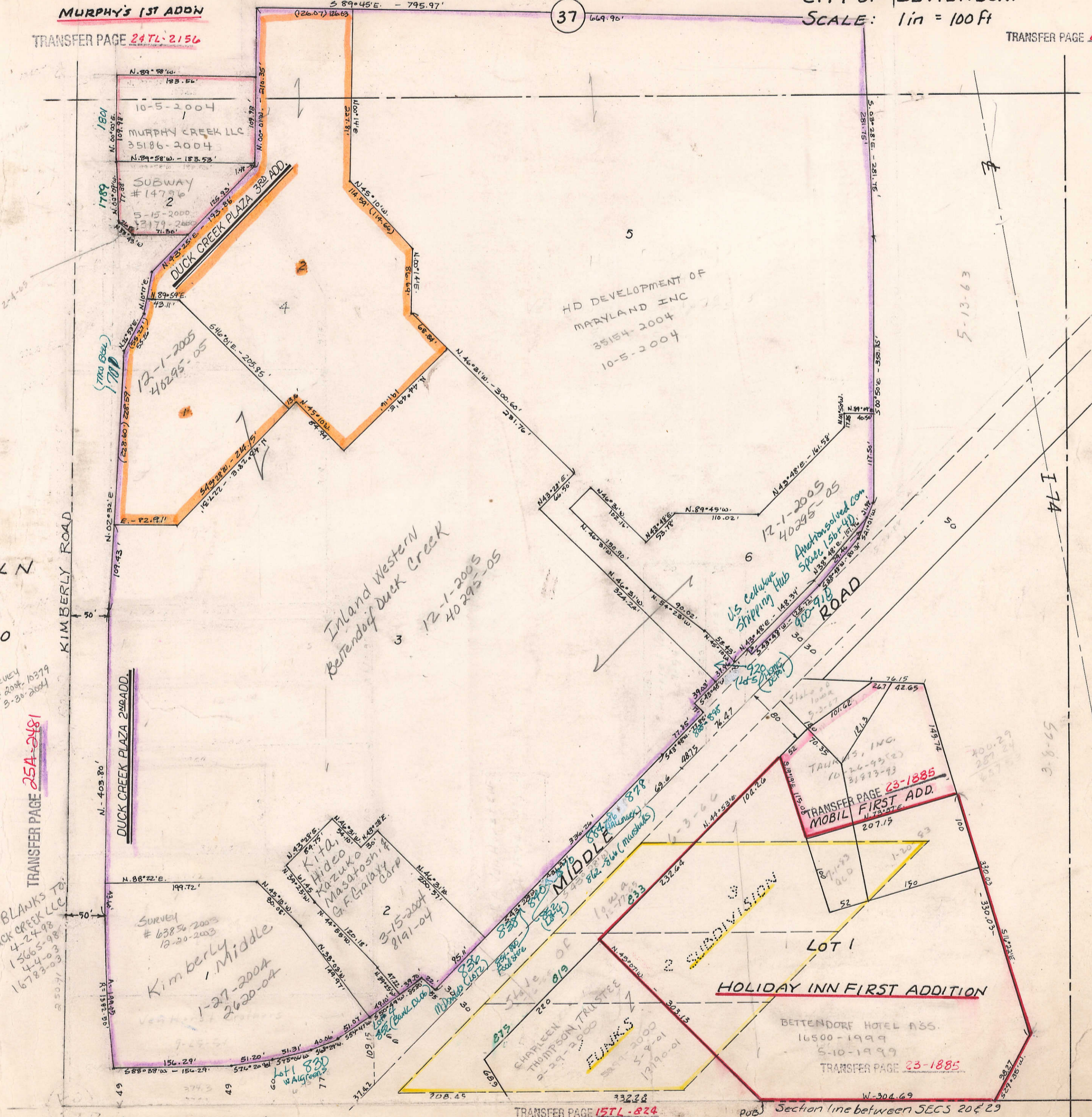


MURPHY'S 1ST ADDN

TRANSFER PAGE 247L-2156

TRANSFER PAGE 62ds-215



DAK VOL N

15

SEC 20

Survey # 2004 10379  
3-30-2004

TRANSFER PAGE 25A-2481

BLANKS TO  
DUCK CREEK LLC  
4-24-98  
15665-98  
44003  
16783-03

DUCK CREEK PLAZA 2ND ADDN

Kimberly Middle  
1-27-2004  
2620-04

Inland Western  
Bettendorf Duck Creek  
12-1-2005  
40295-05

HOLIDAY INN FIRST ADDITION

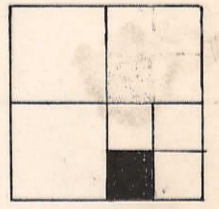
BETTENDORF HOTEL ASSN.  
16500-1999  
6-10-1999  
TRANSFER PAGE 23-1885

TRANSFER PAGE 157L-824  
VOL A SEC 29

5

1/4 Corner SEC 20-78-4

Section line between SECS 20 & 29



55

5-13-63

I-74

5-8-65

5.08+28.15 = 281.15'

.55.05 = 3.05.00.5

.15.11

.15.11

.15.11

.15.11

.15.11

.15.11

.15.11

.15.11

.15.11

.15.11

.15.11

.15.11

37

5

5

669.90'

S 89° 45' E - 795.97'

(26.07) 126.63

N. 89° 58' W - 123.54'

10-5-2004

MURPHY CREEK LLC

35186-2004

N. 89° 58' W - 123.54'

10-5-2004

MURPHY CREEK LLC

35186-2004

N. 89° 58' W - 123.54'

10-5-2004

MURPHY CREEK LLC

35186-2004

N. 89° 58' W - 123.54'

10-5-2004

MURPHY CREEK LLC

35186-2004

N. 89° 58' W - 123.54'

10-5-2004

MURPHY CREEK LLC

35186-2004

N. 89° 58' W - 123.54'

10-5-2004

MURPHY CREEK LLC

35186-2004

N. 89° 58' W - 123.54'

10-5-2004

MURPHY CREEK LLC

35186-2004

N. 89° 58' W - 123.54'

10-5-2004

MURPHY CREEK LLC

35186-2004

N. 89° 58' W - 123.54'

10-5-2004

MURPHY CREEK LLC

35186-2004

N. 89° 58' W - 123.54'

10-5-2004

MURPHY CREEK LLC

35186-2004

N. 89° 58' W - 123.54'

10-5-2004

MURPHY CREEK LLC

35186-2004

N. 89° 58' W - 123.54'

10-5-2004

MURPHY CREEK LLC

35186-2004

N. 89° 58' W - 123.54'

10-5-2004

MURPHY CREEK LLC

35186-2004

N. 89° 58' W - 123.54'

10-5-2004

MURPHY CREEK LLC

35186-2004

N. 89° 58' W - 123.54'

10-5-2004

MURPHY CREEK LLC

35186-2004

N. 89° 58' W - 123.54'

10-5-2004

MURPHY CREEK LLC

35186-2004

N. 89° 58' W - 123.54'

10-5-2004

MURPHY CREEK LLC

35186-2004

N. 89° 58' W - 123.54'

10-5-2004

MURPHY CREEK LLC

35186-2004

N. 89° 58' W - 123.54'

10-5-2004

MURPHY CREEK LLC

35186-2004

N. 89° 58' W - 123.54'

10-5-2004

MURPHY CREEK LLC

35186-2004

N. 89° 58' W - 123.54'

10-5-2004

MURPHY CREEK LLC

35186-2004

N. 89° 58' W - 123.54'

10-5-2004

MURPHY CREEK LLC

35186-2004

N. 89° 58' W - 123.54'

10-5-2004

MURPHY CREEK LLC

35186-2004